

PCB Number: XX####  
PCB Rev: E1

PCB  
LOGO  
*Texas Instruments*

LBL1  
PCB Label  
Size: 0.65" x 0.20"

ZZ1  
Label Assembly Note  
This Assembly Note is for PCB labels only

ZZ2  
Assembly Note  
This Assembly Note will show in the PcbDoc and associated outputs

ZZ3  
Assembly Note  
This Assembly Note will show in the PcbDoc and associated outputs

ZZ4  
Assembly Note  
This Assembly Note will show in the PcbDoc and associated outputs

Designed for: Public Release		Mod. Date: 2/6/2015	
Project Title: Wireless Motor Monitor			
Number: XX####	Rev.: E1	Sheet Title:	
Sponsor: Version control disabled		Assembly Variant: No Variations	Sheet 8 of 6
Drawn By:		File: Hardware ANSI-B SchDoc	Size: B
Engineer: LEO ESTEVEZ		Contact: http://www.ti.com/support	

Texas Instruments and/or its licensors do not warrant the accuracy or completeness of this specification or any information contained therein. Texas Instruments and/or its licensors warrant that this design will meet the specifications, will be suitable for your application or fit for any particular purpose, or will operate in an implementation. Texas Instruments and/or its licensors do not warrant that the design is production worthy. You should completely validate and test your design implementation to confirm the system functionality for your applic.

© Texas Instruments 2014

Layer Stack Up Detail for: Wireless Motor Monitor.PcbDoc

Layer Name	Order Document	Copper Thickness	Dielectric Height	Dielectric Material	Dielectric Constant	Dielectric Type
Top Solder Mask	(.GTS)		0.4mil	Solder Resist	3.50	
Top Layer	(.GTL)	1.4mil				
Mid.Layer1	(.G1)	1.4mil	12.6mil	FR-4 High Tg	4.80	PrePreg
Mid.Layer2	(.G2)	1.4mil	30mil	FR-4 High Tg	4.80	Core
Bottom Layer	(.GBL)	1.4mil	12.6mil	FR-4 High Tg	4.80	PrePreg
Bottom Solder Mask	(.GBS)		0.4mil	Solder Resist	3.50	

DESIGN INFORMATION

MIN. TRACK WIDTH: 3.5 MIL  
MIN. CLEARANCE: 6 MIL  
MIN. VIA PAD SIZE: 20 MIL  
MINIMUM ANNULAR RING 0.05mm (2MIL) EXTERNAL  
PER IPC-D-275 CLASS 2 LEVEL C  
REGISTRATION TOLERANCES: METAL +/- .5 MIL, HOLES +/- .3 MIL

MATERIAL:  
☐ FR-408 ☒ FR-4 High Tg ☐ OTHER  
THICKNESS: ☒ 62 MIL (1.6mm) +/-10% ☐ OTHER  
TOLERANCE: ☒ ANSI IPC-6012 TYPE 3 CLASS 2  
☐ OTHER +/-  
BOW & TWIST: ☒ ANSI IPC-6012 TYPE 3 CLASS 2  
☐ OTHER +/-

DRILLING:  
REFERENCE: ☒ AS SHOWN ☒ NC\_DRILL FILES  
PTH MIN COPPER THICKNESS: ☒ 1MIL ☐ OTHER

BOARD FINISH:  
SILKSCREEN: ☒ TOP ☒ BOTTOM  
SILKSCREEN COLOR: ☒ WHITE ☐ OTHER  
SOLDER RESIST COLOR:  
☒ GREEN ☐ BLUE ☐ OTHER

SURFACE FINISH: ☒ IMMERSION GOLD (ENG) ☐ ENERPIG  
☐ IMM. TIN/SILVER OR EQUIV ☐ OTHER

ARRAY/PANEL: ☐ CUT AND TRIM PER MECH LAYER 1  
☐ N.C. ROUTE ☒ V. SCORE

CERTIFICATION: MATERIALS AND WORKMANSHIP FOR ALL PCBs TO MEET OR EXCEED THE REQUIREMENTS OF:  
☒ ANSI IPC-A-600F CLASS -> ☐ 1 ☒ 2 ☐ 3  
☒ UL 94V-0 ☒ RoHS ☐ OTHER PER ORDER

ADDITIONAL REQUIREMENTS:  
MICROSECTION: ☐ YES  
BARE BOARD ELEC. TEST: ☐ NONE ☒ REQUIRED ☐ PER ORDER  
MANUFACTURER'S UL: ☐ RAIL ☐ METAL ☒ SILK



PROJECT TITLE:  
Wireless Motor Monitor

DESIGNED FOR:  
Public Release

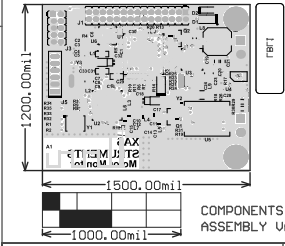
FILE NAME:  
Wireless Motor Monitor.PcbDoc

ENGINEER:  
LEO ESTEVEZ

LAYOUT BY:  
Krypton-Solutions

SCALE: 1.00

ALTUM DESIGNER VERSION:  
14.3.16.37051



COMPONENTS MARKED 'DNP' SHOULD NOT BE ORDERED. TO ORDER, REMOVE 'DNP' FROM THE PART NUMBER. (noitavruo oM) :TNAIRAU YJBM322A

ADDITIONAL COMMENTS:	13	REVISION: X111111X :#	DATE: E1	SUN 3/22/2010 10:08:16 AM
LAYER NAME = TOP OVERLAY	390101			
PLATTINUM ETCHING	Composite	GENERATED: 3/30/2010 1:24:21 PM	TEXASINSTRUMENTS	

Texas Instruments (TI) and/or its licensors do not warrant the accuracy or completeness of this specification or any information contained therein. TI and/or its licensors do not warrant that this design will meet the specifications, will be suitable for your application or fit for any particular purpose, or will operate in an implementation. TI and/or its licensors do not warrant that the design is production worthy. You should completely validate and test your design implementation to confirm the system functionality for your application.

Boards